



Rotary Club of Christchurch South Inc.

P O Box 12-243, Christchurch 8023, NZ.

SERVICE ABOVE SELF



Bulletin

#45 for 03 June 2026

Club Meeting Report for 03 June 2026

Members were privileged to hear from Hannah Reed, Business Development Manager for Blood Cancer New Zealand, who provided a compelling insight into the challenges faced by people diagnosed with blood cancers and the vital support provided by the organisation.

Hannah began by sharing the story of Isaac, a keen sportsman from Ashburton whose life changed dramatically at age 13. After suffering persistent fatigue, weight loss and declining health following what appeared to be the flu, Isaac and his family spent months seeking answers. Despite repeated visits to doctors and hospital appointments, a diagnosis proved elusive. It was only after a new GP recognised the seriousness of his condition that Isaac was urgently transferred to Christchurch Hospital, where tests revealed a large chest mass. He was eventually diagnosed with B-cell lymphoma and immediately began intensive chemotherapy treatment.

Isaac's story highlighted the complexity of blood cancers. Hannah explained that blood cancer is not a single disease but encompasses more than 100 different conditions, including leukaemia, lymphoma and myeloma. Eight New Zealanders are diagnosed every day, with approximately 27,000 people currently living with a blood cancer. It is the third leading cause of cancer-related deaths in New Zealand, and there is currently no screening programme or proven preventative measure available.

The impact extends far beyond medical treatment. Hannah noted that many patients and families face significant financial hardship, with one in seven spending more than \$100,000 on treatment-related costs. Many exhaust their savings, while carers often experience mental health challenges and disruptions to employment.

Blood Cancer New Zealand addresses these needs through three key areas: delivering care, driving action and supporting research towards cures. The organisation supports around 3,000 patients and



family members annually through specialist support staff located throughout the country. Services include emotional support, home and hospital visits, financial assistance, educational resources and support groups.



Isaac’s family benefited from several of these programmes. A support worker introduced the “Monkey in My Chair” initiative, which helped Isaac remain connected to his classmates while undergoing treatment. His younger sister Bella also received support through Kids Club, a programme designed for children affected by a family member’s diagnosis.

Hannah also spoke about the organisation’s advocacy work, particularly its efforts to improve access to modern cancer medicines. New Zealand currently ranks near the bottom of OECD countries for funding newly developed medicines, a situation that can force some patients to seek treatment overseas.

The presentation concluded on a hopeful note. Isaac is now recovering, gradually returning to school and sport, and enjoying life with his new dog, Marlo. His story serves as a powerful reminder of the importance of early diagnosis, family support, research and community generosity.

Members thanked Hannah for an informative and inspiring presentation and for highlighting the important work being undertaken by Blood Cancer New Zealand.

Alan McKinnon with the usual help from ChatGPT

Upcoming meetings:

- 10 June

Josh Gardiner - Christchurch City Mission Community Outreach to the Homeless

- 17 June

No guest speaker. Instead, regular agenda but at speaker slot, a 'Midwinter Christmas' Port and Cake: tables rearranged for seating both sides and a social half hour. An opportunity to catch up with members that you don't regularly sit with.

- 24 June

Change-over Night - the year past and the year ahead.

UPCOMING ROTARY COMMUNITY SERVICE PROJECTS

1. John Taylor Walkway

Saturday 8th August '26 (this is an amended date!)>

10-12 for maintenance Followed by a BBQ.

2. Cashmere Stream Esplanade

WINTER PLANTING DAY

Saturday 18th July

10-12 with a shared lunch to follow.

Notices:

- **June Walk - SATURDAY 20 June**

-
- **From: Sonya Price <sonya@familyhelptrust.org.nz>**

Sent: Thursday, 4 June 2026 1:35 pm

To: Graham Dockrill - Citrus Tree Consultants

<graham@citrustreeconsultants.com>

Subject: Re: Donation Receipt

Hello Graham,

We thought we would share with you how the Rotary Club's donation supported our families and children. It was a real highlight to be able to purchase such great-quality gear for the tamariki we have the pleasure of supporting.

SEE

"Amazing winter warmers have been purchased for tamariki, helping ensure they are warm on their journeys to school and preschool. This has been made possible thanks to the generous donation received from the Rotary Club"



Kind regards,

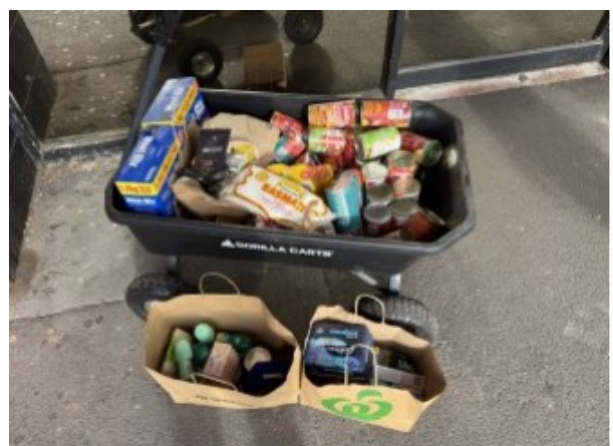
Sonya Price

Office Manager

Family Help Trust

Cans for a Cause.

Thanks Viv, for organising this.



Cans for a Cause

Many thanks to all those who contributed to Cans for a Cause. I dropped off the 83 cans and nonperishable goods today to The Hoon Hay Foodbank. They were incredibly appreciative.

Special thanks goes to the person who donated deodorants and soap. Something I would never have thought of giving. I can't think passed Weetbix!

Viv.

-
- **From: Josephine Hoyne Sim <josephineh@aviva.org.nz>**
Sent: Tuesday, 2 June 2026 2:21 pm
Subject: Aviva Street Appeal running total is...

Thank you, thank you, thank you for helping collect for the Aviva Street Appeal last week! Apologies for my delayed follow-up as I was out sick with a nasty cold all of last week.

I have been completely overwhelmed with all the support we received for the Street Appeal. This was one of the biggest collections I've ever seen in my 7 years at Aviva, with over 200 volunteers doing over 400 collection hours across Canterbury. Our whai ora have had it hard the past few years, and to see the community step up to support to this level has been amazing!

As I wasn't the only one struck by illness last week, we're still sorting out the last few buckets. I can't get you the grand total yet, but I thought I'd send you an update. So far we've counted nearly \$23,000 in bucket donations! With another 15 or so buckets still to count.

You also helped us raise \$12,450.40 in online donations and bank transfers, with \$10,000 of this matched for a total of \$22,450.40 for our match giving campaign! I have never seen so many online donations flood through during Appeal. I was updating that thermometer like mad all day! And I know it was from all of you pushing online donations and match giving during your collections! Well done!

Once we have all the buckets back and a final tally, I will send out a final update on how much we raised. Ka pai

Josephine Hoyne Sim

Fundraising and Communications Specialist , Aviva.

Duties:

| Duty | 10-Jun-26 | 17-Jun-26 | 24-Jun-26 |
|---------------------|------------|------------|------------|
| Cash Desk | G Bailey | A Airay | A McKinnon |
| Cash Desk | M Osselton | M Bruce | #N/A |
| Reception | V Ellis | A McKinnon | #N/A |
| Speaker's Host | H Garlick | V Ellis | #N/A |
| Grace | H Garlick | V Ellis | H Garlick |
| International Toast | V Ellis | A McKinnon | #N/A |
| Thanks to Speaker | G Bailey | M Bruce | #N/A |
| Quote for the Week | M Osselton | A Airay | #N/A |
| Speaker Reporter | D Peterson | M Opie | V Ellis |
| Sergeant | A Airay | L Bougen | #N/A |

Leave:

| | from | to |
|--------------|------------|------------|
| S Hays | 11/08/2020 | TBA |
| E Bermingham | 01/01/2023 | TBA |
| SMcLean | 20/03/2024 | TBA |
| A Kim | 30/06/2025 | TBA |
| M Soares | 01/05/2026 | 04/11/2026 |

The link for the club web pages is
www.christchurchsouthrotary.org.nz

The link to club Facebook pages is
<https://www.facebook.com/ChristchurchSouthRotary>

Reminders:

Record your apology at the Reception Desk at a prior meeting, OR email: chchsouthrotary@gmail.com before 11.00am Wednesday.

You will get a reminder a couple of days before the meeting re apologising and to advise if bringing a guest.

Emergency apologies to Alan McKinnon (021 142 7668)

OR, Club Secretary Viv Ellis (027 490 3161)

DUTIES If you are unable to carry out your allocated duty, it is YOUR responsibility to arrange a substitute.

LEAVE OF ABSENCE

Please advise all leave of absence of 3 or more weeks to the Secretary, by email or in writing.